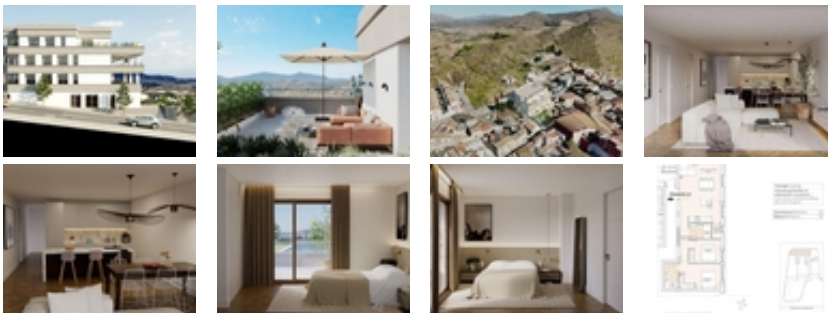




Ref. N:N8775/7515

€ 205 000

- Bedrooms: 2
- Bathrooms : 2
- S: 83m²
- Design and Interior
 - built-in wardrobes
- Layout and decoration
 - Storage room
- Territory
 - Elevator
 - Community Garden
 - Public swimming pool
- Distance
 - Beach:37 km. m.



Exclusive New Build Apartments with Views of the Vineyards in Hondón de las Nieves~~Modern Homes in a Unique Natural Setting~Discover this new development of flats in Hondón de las Nieves, a charming village set in a beautiful valley surrounded by olive and almond groves. This development offers 15 exclusive 2 and 3 bedroom homes, all designed to offer maximum comfort, energy efficiency and stunning views of the Vinalopó vineyards.~~Located in Vinalopó Medio, this peaceful enclave is ideal for those seeking a relaxed Mediterranean lifestyle, with easy access to nature and all essential services.~~High Quality Features and Modern Design~Each flat has been designed with top quality materials and a functional layout, offering:~~Spacious and open-plan living spaces, ideal for modern living.~Fully fitted kitchens with granite worktops.~Top of the range bathrooms with built-in cisterns and top quality sanitary ware.~Energy efficiency with athermo system for hot water.~Pre-installation of ducted air conditioning, guaranteeing comfort in all seasons.~Aluminium windows with double

glazing, providing thermal and acoustic insulation.~Reinforced security entrance door for peace of mind.~Parking space and storage room in basement, included in the price.~Lift in the building, ensuring accessibility and comfort.~Solar panels on the rooftop to improve energy efficiency and reduce maintenance costs.~In addition, the residential has a communal swimming pool, perfect for enjoying the Mediterranean climate.~~Privileged location in Hondón de las Nieves~Hondón de las Nieves is a town with a great wine-growing tradition, famous for its table grapes with the Vinalopó denomination of origin. Surrounded by the Sierra de Crevillente, the area offers numerous hiking trails, natural areas and a rich cultural and historical offer.~~From your new home, you will have quick access to the main points of interest in the area:~~Alicante Airport - 30 km (30 minutes by car).~Alicante Beaches - 35 km (35 minutes by car)~Elche - 20 km (20 minutes by car)~Crevillente Natural Park - 10 km (15 minutes drive)~Golf Courses - 25 km (30 minutes drive)~~An Ideal Home on the Costa Blanca~Enjoy the tranquillity of the Hondón Valley, without giving up the proximity to Alicante and Elche. Whether as a permanent residence, holiday home or investment property, these modern flats are an unbeatable choice.~~Contact us today for more information or to arrange a viewing.~